



Consult Australia Membership

*The voice of businesses in design,
advisory and engineering*

MEMBERSHIP FORM



Contents

About Consult Australia

- Current Members
- Governance
- States & Territories
- Sponsorship

Your Industry

- People
- Practice
- Procurement
- Pipeline
- Advocacy & Peer to peer engagement
- Keep in touch

Your Business

- Business Services
- Compare & Benchmark

Your Career

- Professional Development
- FutureNet
- FutureNet Business Leaders Program
- Events
- Awards for Excellence

Consult Australia Values

From the CEO



Consult Australia is the only organisation in Australia that represents the voice of the professional consulting sector in our industry. [Our team](#) of government relations and industry association professionals is committed to promoting the outstanding contribution that you make to Australia's communities and economy. We aim to make every engagement you have with us positive providing you with opportunities to be at the forefront of industry advocacy, thought leadership, business development and growth. In turn, we thrive by engaging with a broad and diverse range of members, the more you and your business interact with us and fellow members the more we can deliver in value to you. The team and I look forward to welcoming you.

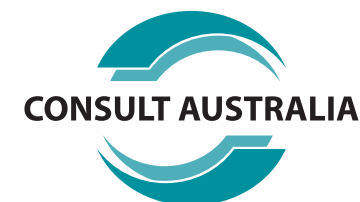
Nicola Grayson

Consult Australia
CEO

Consult Australia National Sponsors



Deltek





About Consult Australia

*The voice of businesses in design,
advisory and engineering*

MEMBERSHIP FORM





About Consult Australia

Consult Australia is the industry association that proudly represents small, medium, and large businesses in design, advisory, and engineering. Our members provide professional consulting solutions to individual consumers, private sector companies, and public sector government clients, local, state, territory and federal. From building design, to advisory services on major infrastructure, our members work across Australia shaping, creating, and sustaining our built and natural environment.

By connecting with and joining Consult Australia we will provide value to your industry, your business, and your career, across four key focus areas, People, Practice, Pipeline, and Procurement. We do this through providing high quality services, advocacy, and thought leadership.

Membership Categories

There are three types of Consult Australia membership available:

1. Full Membership

Available to firms that provide consulting services in the built and/or natural environment and which are primarily run by professionals.

2. Associate Membership

Available to any firm or business that is engaged in work with the built and/or natural environment but does not provide consulting services.

3. Affiliate Membership

Available to government agencies and authorities

More detailed information on our membership categories can be found [here](https://www.consultaustralia.com.au).



Current Members

Consult Australia gratefully acknowledge all of our corporate and small business members. We are proud to be supported by leading companies in the build environment sector. Their invaluable support helps positively shape our industry into the future.

A list of our members can be found [here](#).

Governance

Consult Australia is the industry association representing the business in design, advisory, and engineering. As a not-for-profit organisation, our governance is the responsibility of our Board. The Board make strategic decisions regarding the direction of the organisation, working with the executive and team.

The organisation and our members operate under a [Constitution](#) and [Code of Ethics](#). These contain the fundamental principles which govern the way we operate and provide a roadmap for running the organisation. Consult Australia also publishes an Annual Report each year that reports on our activities and financial situation.

More information on our governance can be found [here](#).

States & Territories

In addition to our nationwide work, Consult Australia has strong representation across the states and territories through committees of members supported by our state/territory managers. Driving advocacy activities responsive to their unique local challenges, we facilitate new networks and business development opportunities for members, deliver professional development, local communications, and engagement.

Find out more about what's happening in your state/territory: [ACT](#) | [NSW](#) | [NT](#) | [QLD](#) | [SA](#) | [TAS](#) | [VIC](#) | [WA](#)



About Consult Australia – Sponsorship

Sponsoring Consult Australia is a strategic way to build brand visibility and increase sales. At Consult Australia we treat all our sponsorships as a business arrangement, ensuring they are recognised for their generosity and receive an impressive return on their investment.

There are several ways that your organisation can sponsor Consult Australia, including:

- Once off event sponsorship
- FutureNet sponsorship
- Awards sponsorship
- Conference sponsorship
- State sponsorship
- National sponsorship
- Thought Leadership sponsorship

We start our sponsorship conversations “with a blank sheet of paper” and work with you to develop a proposal that not only meets, rather exceeds your expectations.

For more information on Consult Australia Sponsorship contact linda@consultaaustralia.com.au.

Current National Sponsors are:



Deltek.



Consult Australia Your Industry

*The voice of businesses in design,
advisory and engineering*

MEMBERSHIP FORM





Your Industry – People

Consult Australia's people advocacy activities focus on creating a vibrant and sustainable workforce. We cover workforce diversity, skills development and education, workplace culture and skilled migration.

Who we influence

The government departments and agencies that make policy decisions relating to our industry current and future workforce and workplaces. This includes departments and agencies with responsibility for skills development, skilled migration programs, work health and safety, and the education sector.

Our Campaigns

Our member-led campaigns include:

- Striving for Mentally Healthy Workplaces
- Strengthening our Talent Pipeline
- Gender Diversity: Champions of Change Coalition

More information on our industry campaigns can be found [here](#).

Recent Submissions

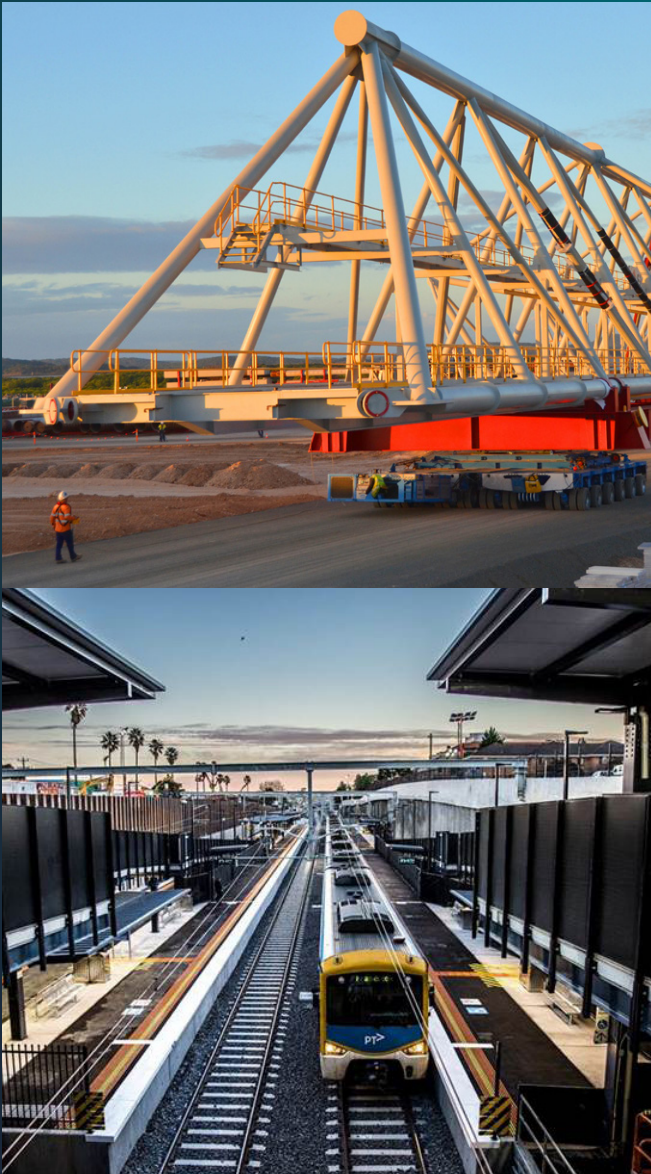
Examples of our recent submissions include:

- Submission to the Inquiry into Mental Health and Suicide Prevention
- Submission to the Inquiry into Australia's Skilled Migration Program
- 2021-22 Federal Budget Submission

Information on all of our submissions can be found [here](#).

Mental Health Knowledge Hub

Consult Australia's Mental Health Knowledge Hub provides a one-stop shop for a range of relevant materials to help members to create mentally health workplaces. More information on the Knowledge Hub can be found [here](#).



Your Industry – Practice

Consult Australia's practice advocacy activities promote enhanced productivity through balanced reforms. We focus on construction and design standards, registration, and licensing systems as well as reforms that impact our members.

Who we influence

Government regulators at all level (federal, state/territory and local) that influence the operating environment of our members. We also engage with organisations that help uplift standards in our industry, such as Standards Australia and the Australian Building Codes Board.

Our Campaigns

Our member-led campaigns include:

- Building Compliance Reforms
- National Registration of Engineers and Practitioners
- Construction and Design Standards

More information on our industry campaigns can be found [here](#).

Submissions on Proposed Reforms

Consult Australia make submissions on proposed reforms always seeking better and smarter regulation.

Examples include:

- Consult Australia Welcomes the Governments commitment to Better Regulation
- Consult Australia welcomes Infrastructure Priority for Deregulation Taskforce

Other Submissions

Examples of other submissions include:

- Federal Budget 2021-22
- ABCB Performance Solution Process



Your Industry – Procurement

Consult Australia's procurement advocacy activities promote improved procurement practices to enable better project outcomes. We focus on tender arrangements, risk allocation, availability and affordability of Professional Indemnity Insurance, contract models and terms as well as liability reform.

Who we influence

The private and public sector clients of our members. This includes government departments and agencies such as those responsible for central procurement (treasuries and finance), contractors, along with project delivery agencies such as the major transport and infrastructure portfolios. We also focus on specialist sectors such as the Commonwealth Department of Defence.

Current Campaigns

We have a number of campaigns running at the moment that members can benefit from. These campaigns include:

- Uplifting Productivity
- Model Client Policy
- Standardised and balanced contract terms

More Information can be found [here](#).

Recent News

Consult Australia keeps you up to date with recent news on areas including:

- Federal Budget 2021-22
- New Guides and Briefings
- Payment Times Reporting Framework
- Supply Change Financing

Recent Submissions

- SA Productivity Commission inquiry into the state's regulatory framework
- Barriers to small business in supplying NSW Government



Your Industry – Pipeline

Consult Australia's Pipeline advocacy promotes the value of a long-term pipeline of projects for thriving communities and a sustainable industry. This portfolio covers infrastructure funding and financing, as well as infrastructure governance and planning.

Who we influence

Government departments and agencies who influence and invest in our industry's future pipeline of public and private sector projects. This includes funding decision-makers and those that influence private sector investment appetite (treasuries and finance at all levels of government), independent infrastructure bodies, and project delivery agencies.

Current Campaigns

Our member-led campaigns include:

- Unlocking stimulus from property tax reforms
- Considering social impacts in infrastructure business cases
- A smarter approach to pipeline planning
- Building the case for infrastructure funding reforms

More information on Current Campaigns can be found [here](#).

Pipeline reports

Other pipeline reports include

- Valuing Better Engagement – Summary
- Smart Cities Guide
- Breaking up is hard to do

More information on pipeline reports can be found [here](#).



Your Industry – Pipeline

Recent Submissions

- 2021-22 Federal Budget
- 2021 Infrastructure Plan
- Bushfires Royal Commission
- Northern Australia Infrastructure Facility

More information on recent submissions can be found [here](#).



Your Industry – Advocacy and Peer to Peer Engagement

Your business can get directly involved in shaping Consult Australia's advocacy campaigns and thought leadership by joining one of our groups.

Large Firms' Forum

Open to the CEO's of businesses in our large membership category (200+ people), these quarterly meetings provide peer to peer conversation

Small and Medium Firms' (SME) Open Forum

Open to the CEO's and leaders of our small and medium membership category (1-199 people), these quarterly meetings provide peer to peer conversation

State/territory committee

Nominate representatives from your business to join your local state/territory Consult Australia committee's to shape and participate in our local advocacy work.



Expert roundtables/working groups

Nominate representatives from your business to join one of our expert roundtables and working groups to inform and participate in our advocacy campaigns and develop thought leadership and business guides. Current groups include:

- People and HR Roundtable
- Immigration Working Group
- Liability and Contracts Roundtable
- Defence Roundtable
- Procurement Working Group
- Business Cases Working Group
- Mental Health Working Group
- Mental Health Ambassador's Network

Consult Australia representation

Consult Australia has a seat at the table across many external stakeholder groups and regularly seeks representatives from the membership to nominate to represent us, for example Standard Australia's standards development committees, government client roundtables across the country (for example our quarterly CoLab meetings with the Department of Defence), and other ad-hoc forums and meetings.

Benefits

- Senior leadership peer to peer network to grow your industry knowledge and market insights
- Oversight and influence of our nationwide advocacy campaigns
- Access to key government and industry stakeholders within small group settings
- Showcase your industry expertise by representing Consult Australia on key senior government/client committees and consultation forums
- Give back to the industry through your active engagement and gain peer recognition of your industry leadership

Consult Australia's Board

Elections are held every two years to fill Board vacancies, providing your business the opportunity to oversee the governance and steer the strategic direction of Consult Australia. Gain board governance experience and be recognised as an industry leader to benefit both your business and your career.



Your Industry – Keep In Touch

News & Media

The following items can be found [here](#).

- [Consult Australia Media Releases](#)
- [Consulting Matters \(online magazine\)](#)
- [Media Kit](#)



Consult Australia Your Career

*The voice of businesses in design,
advisory and engineering*

MEMBERSHIP FORM





Your Career – Education

Benefitting both your business and your career, we deliver a series of education courses at a state level but with content applicable wherever you work. Each course relates to our key focus areas of People, Practice, Pipeline, and Procurement. See our course listings [here](#).

Examples of Education courses include:

- Contracts for Consultants
- Managing Projects for Disputes and Claims
- Role of the Superintendent
- Safety in Design

Information on course content is available [here](#) and for dates and times see [here](#).

Course Benefits:

- Provided by highly respected subject matter experts
- Content specifically relevant to the daily issues experienced by your business
- Boost your confidence and skill level learning from leading industry experts in areas, relevant to your business needs and strategy
- Continue your investment in the development of you and your team's leadership skills
- Raise the profile of your business by participating in the discussion
- Grow your network with peers and your key stakeholders



Your Career – Education (In-house and Customised Delivery)

Consult Australia offers both members and non-members a range of our Education Courses as in-house options. Examples of these course include:

- [Contracts for Consultants](#)
- [Managing Projects for Disputes and Claims](#)
- [The Role of the Superintendent](#)
- [Safety in Design](#)

These in-house training courses are designed to give your company greater flexibility in scheduling at a time that is convenient to your team and it encourages teamwork and discussion. During the course our facilitators can cultivate discussion and debate about real world examples pertinent to your company.

Our in-house courses offer great value for money and can be run either at your premises or at an off-site location of your choosing or online for even greater flexibility.

If you are looking to focus on some key components of a courses, talk to us about specific customisation, our team is happy to work with your team and our facilitators to put together a course that covers your specific needs.

An overview of the courses and standard rates for our in-house courses can be found [here](#).

Note member pricing is less than non-member pricing.



Your Career – FutureNet

FutureNet is an Australia-wide initiative of Consult Australia, providing young professionals with opportunities to develop their peer to peer networks and develop their leadership skills by attending engaging social and educational events. FutureNet participation is open to both members and non-members. Explore more [here](#).

FutureNet activities are coordinated through committees that are made up of keen young professionals from all parts of professional services including, but not limited to, engineers, architects, lawyers, project managers, cost managers (quantity surveyors), planners, environmental scientists, interior designers, developers, construction professionals and financial service professionals.

Note: Only Consult Australia members can hold executive positions on FutureNet Committees.

Benefits:

- Filling a niche by enabling the development of non-technical skills that are essential to succeeding in today's competitive marketplace
- Content-rich events involving a wide range of professional experts, industry groups, academia, politicians, and all-round interesting people keeping our young professionals up to date on topical issues and challenges, ensuring they are on the cutting edge of our industry
- Peer to peer networking and support

FutureNet currently operates in:

- Adelaide
- Brisbane
- Canberra
- Melbourne
- Newcastle
- Perth
- Sydney
- Townsville



Your Career – The FutureNet Business Leader Programme New South Wales

Highly regarded across the industry, Consult Australia's FutureNet Business Leader Programme has been running annually for more than a decade. During 2020 the course was continuously improved and updated in line with leadership trends and the requirements of future leaders.

A once-in-a-career opportunity to **reward and support** your best employees, the programme targets built and natural environment professionals with **5 to 10 years of experience** who are highly valued by their organisations and seen as future leaders.

The programme will:

- Develop leadership, management, and collaboration skills
- Improve soft skills, communication, and confidence
- Provide fresh perspectives on workplace and industry challenges
- Ensure access to the latest industry thinking, knowledge and insights
- Create a career-long network of cross-industry relationships
- Leverage unique mentoring opportunities

Through **sixteen sessions delivered over eight months** the programme builds on exiting personal strengths, identifies and develops new strengths and skills and broadens networks.

Sessions will run every second Thursday in a central Sydney location from 5:00pm to 8:30pm, including networking time and dinner. Participants are also expected to make time outside of the sessions to work with their team on the project element(s) of the course. Winning project teams are selected based on both a public vote and their presentations to a panel of expert industry judges.

More information can be found [here](#).

The cohort of Future Leaders are given a unique opportunity develop and hone their project development and community engagement skills by working in teams on project, which they will pitch to the client and a panel of judges working in teams on a project. Previous clients have included Liverpool City Council, Deerubbin Aboriginal Land Council and Eurobadella Council.



Your Career – The FutureNet Business Leader Programme Victoria

Highly regarded across the industry, Consult Australia's FutureNet Business Leader Programme has been running annually for more than a decade. During 2020 the course was continuously improved and updated in line with leadership trends and the requirements of future leaders.

A once-in-a-career opportunity to **reward and support** your best employees, the programme targets built and natural environment professionals with **5 to 10 years of experience** who are highly valued by their organisations and seen as future leaders.

This programme will be offered in Victoria from September 2021 and will enable companies to participate in individual sessions or the full program.

The programme will:

- Develop leadership, management, and collaboration skills
- Improve soft skills, communication, and confidence
- Provide fresh perspectives on workplace and industry challenges
- Ensure access to the latest industry thinking, knowledge and insights
- Create a career-long network of cross-industry relationships
- Leverage unique mentoring opportunities

Time Commitment

Through sixteen sessions delivered over eight months the programme builds on exiting personal strengths, identifies and develops new strengths and skills and broadens networks. Programme sessions will run every second Thursday in a central Melbourne location from 5:00pm to 8:30pm, including networking time.

More information can be found [here](#).



Your Career – Events & Professional Development

In-person Events

Consult Australia runs a full calendar of in-person professional development events across Australia. These include our intimate Boardroom Luncheon series, which gives members the opportunity to engage with key decision makers in their region, to relevant breakfast briefings, sundowner sessions, networking opportunities and much more.

Our intimate Boardroom luncheon events are member only first option events, with other events open to the industry at differing member and non-member rates.

Online Events

To offer more flexibility Consult Australia also offers a series of national online events and Professional Development throughout the year. These topical sessions enable members and non-members to learn and engage across the country from their desk.

Our online events are open to the industry at large with differing member and non-member rates applicable. See a full list of our upcoming events in your state & territory [here](#).

Annual National Conference

Commencing in April 2022 Consult Australia will be moving from a Leaders only conference to a full two-day Annual National Conference for the industry as a whole. This means there will be an education stream and networking opportunities for everyone within your organisation. Senior Leaders will have the opportunity to learn and network with like individuals and likewise with Emerging Leaders.

We have recognised that one-size does not fit all and we are looking forward to creating an all of industry hub over two years annually. The annual national conference will conclude with a conference black tie dinner, this dinner will announce and celebrate the Annual Awards for Excellence winners, the success of the conference and any other relevant industry milestones.



CONSULT AUSTRALIA

Consult Australia Your Business

*The voice of businesses in design,
advisory and engineering*

MEMBERSHIP FORM





Your Business – Annual National Awards for Excellence Programme

The Consult Australia Awards for Excellence is our annual awards program that provides an opportunity to profile and promote the outstanding achievements of Consult Australia's members to the industry and community.

Since their inception, the Awards have celebrated excellence in the delivery of individual projects. Small, medium, and large consulting businesses are all represented within the program and the gala presentation at the conclusion of the annual national Conference will provide an opportunity to network with and gain recognition from peers in your industry.

The Awards for Excellence have undergone significant review to ensure they remain relevant. Of particular importance is the value of entering and what comes from the success.

Work has been undertaken to ensure winners are provided with every possible opportunity to profile their business as the winner of the highest industry accolades.

[SEE THE 2020 WINNERS](#)

Hall of Fame

The Consult Australia Hall of Fame winners are celebrated for excellence in their field. Companies are honoured by entry into the Hall of Fame if they have won the Small Firm of the Year, Medium Firm of the Year or Large Firm of the Year category for (3) consecutive years. Being a member of the Hall of Fame is a highly prestigious honour and one offered only to the very best. Hall of Fame entry is for a period of 2 years, after this time companies may re-enter the category they won the standing for.



Your Business – Business Services

Consult Australia is dedicated to supporting your business to be the most vibrant and successful it can be. We provide services and resources to members that will protect your business, grow your client base, and support your people.

Contracts

The Standard Form Contract for Engagement of Consultants and related documents are developed specifically for our membership. Members have free access included in membership to our standard form contract for the engagement of consultants and accompanying advisory note.

Other documents to assist with managing contracts include Consult Australia's Guide to Contract Terms: Managing Unfavourable Terms and our Risk Management Guidelines for Consulting Engineers.

More information can be found [here](#).

Briefing Notes

We keep your business informed of upcoming regulatory and policy changes that will impact your business across People, Practice, Pipeline, and Procurement. We issue alerts via our Pulse Newsletter with access to the briefing notes via our website. More information can be found [here](#).

Business Guides

We produce and update practice notes and business guidance available for download from our website covering a wide range of subjects including human resources, liability and insurance, workplace health and safety etc. More information can be found [here](#).



PI Pathway

An introductory service to a panel of two PI Pathway leading insurance brokers who offer comprehensive access to insurers providing broad policy coverage along with expert advice on price, coverage, and contract terms. More information can be found [here](#).

Safety in Design Toolkit

This Toolkit provides a step-by-step guide to the process of Safety in Design via a simple flowchart. It also includes a template hazard risk register, letter to client and final safety report. More information can be found [here](#).

Economic Forecast

This comprehensive annual report provides a detailed profile of our industry and an analysis of the market opportunities for your business and includes commentary by location as well as market sector.

Benefits include:

- Access to market trend data to inform your business strategy
- Assists your business development strategy and target sectors for growth

More details of the economic forecast can be found [here](#).



Your Business – Compare & Benchmark

Consult Australia undertakes benchmarking activities every year so you can better understand the market and compare your business processes and performance metrics to others. Benchmarking helps us to identify industry best practices, the current work environment and gives you the opportunity to see where your business can improve.

Benchmarking information includes:

Industry Health Check

This member health check survey launched in 2020 during the pandemic provides a check-in for members to anonymously report challenges in current market conditions and confidence levels looking ahead to the next six months.

Benefits include:

- Insights into market conditions across the membership and broken down by size of business
- Benchmark for your business across a range of industry indicators, including workforce, pipeline of work, insurance, and operating environment

Practice Performance Survey

The Consult Australia Practice Performance Survey (PPS) is a free, secure, user-friendly, electronic survey tool which provides members with the opportunity to benchmark their performance within the industry across a range of key performance indicators including revenue, expenses, staff size, utilisation, profit margins, and working capital investment days. Survey participation is restricted to Consult Australia members.

The survey is conducted annually with data collection occurring in September each year. Participation is restricted to Consult Australia members with the resulting benchmarking reports only available to participants.

More details of the Practice Performance Survey can be found [here](https://www.consultaustralia.com.au).



Skills Survey

Employment data is essential for Consult Australia and its members to better understand workforce development requirements.

Consult Australia's skill survey results reports are also a great benchmarking tool for the industry, provide real-world examples to support advocating for government action, and are a useful source of information for workforce planning by government agencies and other stakeholders.

More details of the Skills Survey can be found [here](#).

For more information about our benchmarking activities, please contact Consult Australia on 02 8252 6700 or email info@consultaustalia.com.au.



Our External Values

Supportive

*Your win is our win,
your challenge is
our challenge*

Influential

*Effecting important
change through
positive
engagement*

Community

*Treating others
as they need to
be treated*

Consult Australia
GPO Box 56
Sydney NSW 2001

P: 02 8252 6700
W: www.consultaustralia.com.au
E: info@consultaustralia.com.au